

# ACRYLIC MEDIA FRAME LightPanel™ System

The **ACRYLIC MEDIA FRAME** LightPanel™ was created to give designers options to display graphics and media a clear acrylic frame.

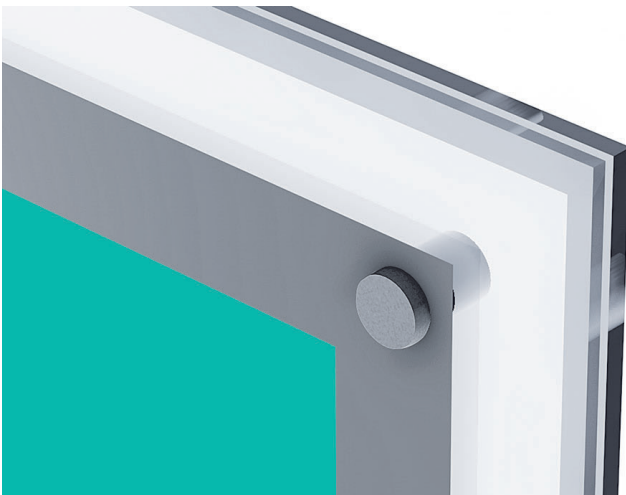
The **ACRYLIC MEDIA FRAME** LightPanel™ is designed to give graphics and posters a modern look that provides evenly distributed illumination to the artwork displayed.

The **ACRYLIC MEDIA FRAME** LightPanel™ may be used for a variety of applications that include:

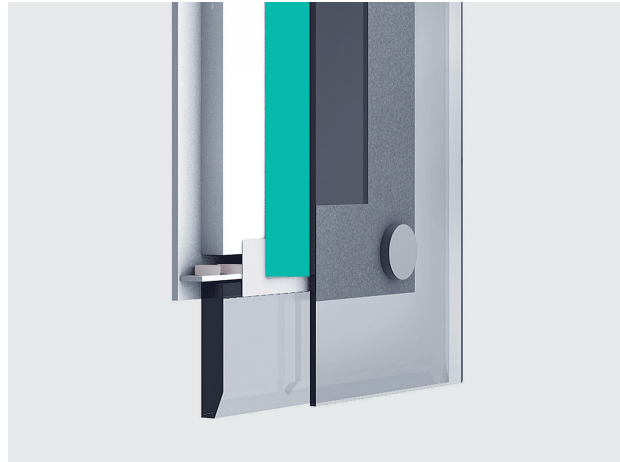
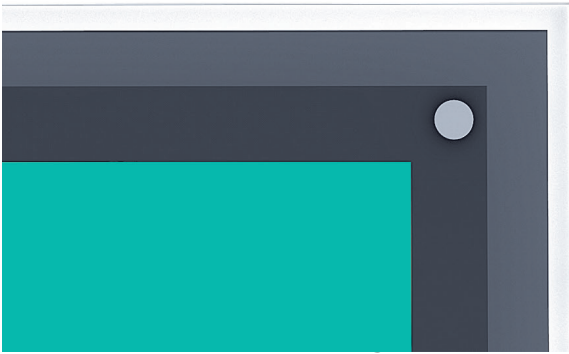
**Branding, Logos, Signage, Custom Art Displays, Hospitality, Retail, Healthcare, Residential, Bars , Restaurants, Commercial Interiors and Gallery Displays.**



- Single Sided Illumination
- Medium and Small Sizes
- Low Power
- Input Voltage: LED 12V / 24V
- Easy Installation and assembly with standoffs.



# PROFILES FOR INSTALLATION



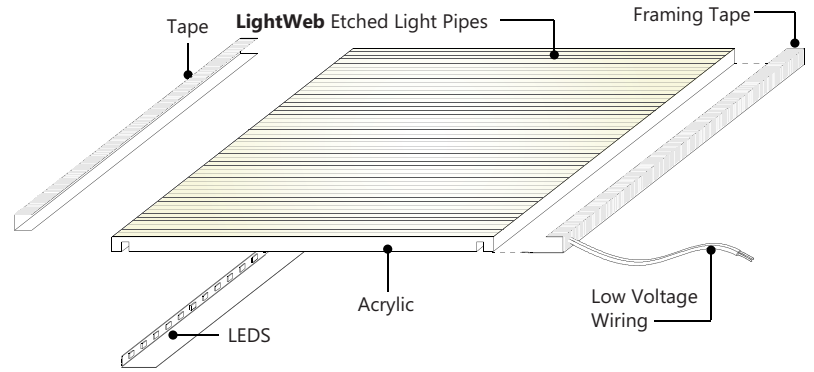
## COMPATIBLE POWER SUPPLIES:

- DMX-Compatible
- DALI Accessible
- Magnetic Low Voltage
- Remote Control In-Line Dimmer
- 0-10V Dimmable
- Electronic Static

|   |  |  |
|---|--|--|
| <p><b>MAXIMUM SIZE AND PROPORTIONS</b><br/>WIDTH 78" X HEIGHT 39"</p> |  | <p><b>MAXIMUM SIZE AND PROPORTIONS</b><br/>WIDTH 118" X HEIGHT 23"</p> |
| <p><b>MINIMUM SIZE AND PROPORTIONS</b><br/>W 8" X H 8"</p>            |  |  |

## APPROVALS AND CERTIFICATIONS:





## General Specifications (Light Panel Only)

### LIGHT WEB TECHNOLOGY™:

3D etched patterns to evenly distribute light throughout the panel. Patterns available are GRID, DOT and MICRODOT™

### ACRYLIC:

Optical Grade  
Cell Cast  
Diamond Polished Edges

### MAXIMUM SIZE:

The maximum size is determined by the frame size  
78" X 39" / 118" X 23"

### MINIMUM SIZE:

8" X 8"

### THICKNESS:

5/16" (Not Including Standaoffs)

### LONG LIFE:

Over 50,000 hours = Nearly 12 years based on 12 hours a day. Once installed, the LightPanel™ System is virtually maintenance free.

### WATTAGE:

2.2 W/Ft. - 12V / 24V Standard Power

4.4 W/ Ft. - 12V - High Power

6 W/ Ft. - 24V - High Power

\*ask eos specialist for information on 4400k, RGB, RGBW and Color Tuning options.

### POWER OUTPUT:

12VDC or 24VDC

### INPUT VOLTAGE:

100V TO 480V

### DIMMABLE:

The system is dimmable to <10% when matched with Dimmable Power Supplies

\*hardwired MLV, 0-10V, or remote control plug in.

### COMPATIBILITY:

USB Compatible.

\* Max. Size 40" X 40"

### LEDs:

ANSI Binned LEDs from Tier 1 Suppliers

LED CRI > 80

LED CRT - 2400K - 6500K

### DAMP LOCATION:

Damp Location Rated when driven with a Class 2 Power Supply

### TAPING:

Moisture Resistant Foil Backed Framing Tape on all sides.

\*See Optional Specifications for Seamless Applications

### BACKING MATERIAL:

Industrial Mil Pearlescent Heat-Bonded Reflective Backing Material.

### APPROVALS AND CERTIFICATIONS:

The LightPanel™ System is UL approved. All power supplies are UL / ETL listed.

### SERVICE AND INSTALLATION:

Field Serviceable, typically LEDs can be replaced in the field. The LightPanel™ System can be predrilled by our production team with customer's specifications.

\*See technical sheet in the back of brochure for disclaimers on how to drill a panel or how to request predrilled holes in a panel for easy installation.

## Optional Specifications

### COLOR TEMPERATURES:

2400K      4800K

2700K      5300K

3500K      6500K

4000K      7500K UV (Ultraviolet)

4400K      RGB, RGBW and Color Tuning



### ADDITIONAL FEATURES:

Standard 12V / 24V Standard Power or 12V / 24V High Power depending on the application and color temperature selected.

# Product Specification Ordering Form

|               |                            |                 |
|---------------|----------------------------|-----------------|
| NAME:         | PROJECT NAME:              | ADDRESS:        |
| PHONE:        | PROJECT LOCATION:          | CITY:           |
| EMAIL:        | ANTICIPATED DELIVERY DATE: | ZIP CODE:       |
| COMPANY NAME: | PROJECT ARCHITECT:         | FREIGHT METHOD: |

|     | A          | B         | C1                     | C2 | D          | E               | F        | G           | H         | I          | J           | K         | L             | M            |
|-----|------------|-----------|------------------------|----|------------|-----------------|----------|-------------|-----------|------------|-------------|-----------|---------------|--------------|
| QTY | PANEL TYPE | LED POWER | DIMENSIONS<br>TOP SIDE |    | COLOR TEMP | PANEL THICKNESS | DIFFUSER | WATER-PROOF | LED SIDES | CORD COLOR | CORD LENGTH | UL RATING | CORD LOCATION | POWER SUPPLY |
| 5   | LP         | SP-12V    | 48                     | 50 | 2700       | 0.25            | NO       | YES         | 4SL       | BC         | ST          | UL        | TL            | DHW          |
|     |            |           |                        |    |            |                 |          |             |           |            |             |           |               |              |
|     |            |           |                        |    |            |                 |          |             |           |            |             |           |               |              |

EXAMPLE:

|    |   |        |   |     |   |    |   |      |   |    |   |     |   |     |   |    |   |    |   |    |   |    |   |     |               |
|----|---|--------|---|-----|---|----|---|------|---|----|---|-----|---|-----|---|----|---|----|---|----|---|----|---|-----|---------------|
| A  | - | B      | - | C1  | x | C2 | - | E    | - | F  | - | G   | - | H   | - | I  | - | J  | - | K  | - | L  | - | M   | SITE VOLTAGE: |
| ↓  |   | ↓      |   | ↓   |   | ↓  |   | ↓    |   | ↓  |   | ↓   |   | ↓   |   | ↓  |   | ↓  |   | ↓  |   | ↓  |   | ↓   |               |
| LP | - | SP-12V | - | 108 | x | 60 | - | 0.25 | - | NO | - | YES | - | 4SL | - | BC | - | ST | - | UL | - | TL | - | DHW |               |

## KEY:

### A. PANEL TYPE

**LP - BASIC** LightPanel™

**LF - FRAMED**

LightPanel™ with C Channel 7/16"

LightPanel™ with J1 Channel 1/4"

LightPanel™ with J2 Channel 5/16"

**LF - MEDIA FRAME**

GRAPHIX LightPanel™ -3/4" x 3/4" Snap Frame

IMAGEART LightPanel™ -1 - 3/8" x 15/16" Snap Frame

IMAGEART -2 LightPanel™ with SF3 Snap Frame

WINDOW LightPanel™ with SF4 Snap Frame

ACRYLIC LightPanel™ with Acrylic Overlay Frame

MAGNETIC LightPanel™ with Magnetic Frame

FABRIK LightPanel™ with Fabric Light Box

SKY LightPanel™ with Suspended Frame

**CP - CRYSTAL** LightPanel™

**CF - CRYSTAL** LightPanel™ with C Channel 7/16"

### B. LED POWER

**SP-12V** - 12V Standard Power

**SP-24V** - 24V Standard Power

**HP-12V** - 12V High Power

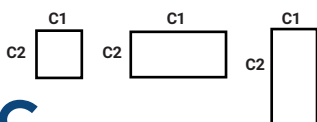
**HP-24V** - 24V High Power

### C. DIMENSIONS (GENERATED BY CLIENT)

**C1** - Top Dimension

**C2** - Side Dimension

\* For shapes indicated below, shapes that are not illustrated are considered custom and require CAD



### D. COLOR TEMP

**2400** - 2400K

**2700** - 2700K

**3500** - 3500K

**4000** - 4000K

**4400** - 4400K

**4800** - 4800K

**5300** - 5300K

**6500** - 6500K

**7500 UV** - 7500K (Ultraviolet)

**RGB** - Color Changing

**RGBW** - Color Changing + White

**CT** - Color Tuning

### E. PANEL THICKNESS

\*Thickness is automatically determined by panel shape, size, color temperature, power output and application.

### F. OPTIONAL 2MM DIFFUSION COVER

**Y**-Yes

**N**-No

### G. WATERPROOF

**Y**-Yes

**N**-No

### H. LED SIDES

**1SL** - One Side

**2SL** - Two Sides

**3SL** - Three Sides

**4SL** - Four Sides

### I. POWER CORD COLOR

**BC** - Black

**WC** - White

### J. POWER CORD LENGTH

**ST** - Standard -9.8 ft.

**CT** - Custom Length \_\_\_\_ ft.

### K. UL RATING

**UL** - Architectural Lighting

**UR** - Signage

### L. POWER CORD EXIT

**TL** - Top Left Corner

**TR** - Top Right Corner

**STL** - Side Top Left Corner

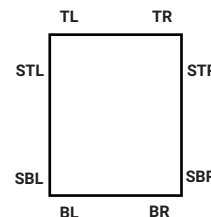
**STR** - Side Top Right Corner

**BL** - Bottom Left Corner

**BR** - Bottom Right Corner

**SBL** - Side Bottom Left Corner

**SBR** - Side Bottom Right Corner



### M. POWER SUPPLY INFO

**PI** - Plug In, DC Jack

**DPI** - Dimmable Plug in w/ remote

**HW** - Hardwired, Bare

**DHW** - Dimmable Hardwired

**REM** - RGB Remote Control

**DMX** - DMX /DALI